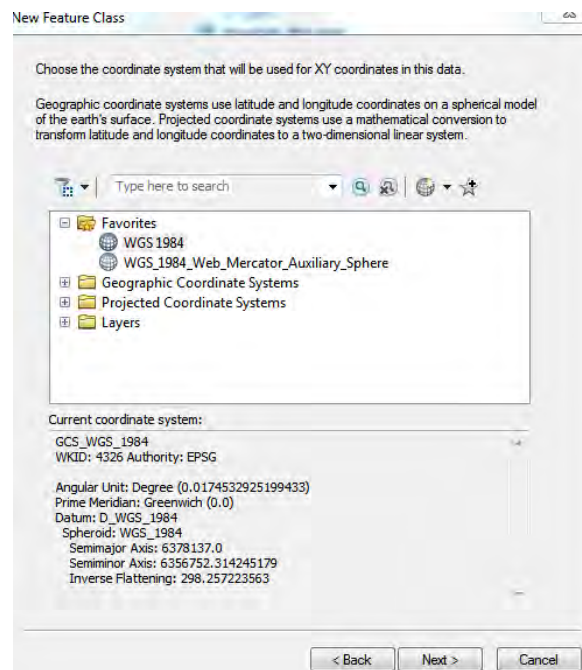


Creating New and Multi-Points in ArcGIS

- **One Option:** Using a spread sheet with location (XY) or Address information. Then, use XY Display or Geocoding tool in ArcMap.
- **Another Option:** Using Geodatabase in the catalog window in ArcMap (e.g. eatures.gdb) Environment by following the steps below.

Step1: creating a feature (point) layer with a name, attributes , and a coordinate system

- Right Click on a geodatabase or a folder>New> Feature Class or shape file (give a name (e.g. *customers*), and a geometry type as **point**)
- The New Feature Class or Shape file box shows up as following:



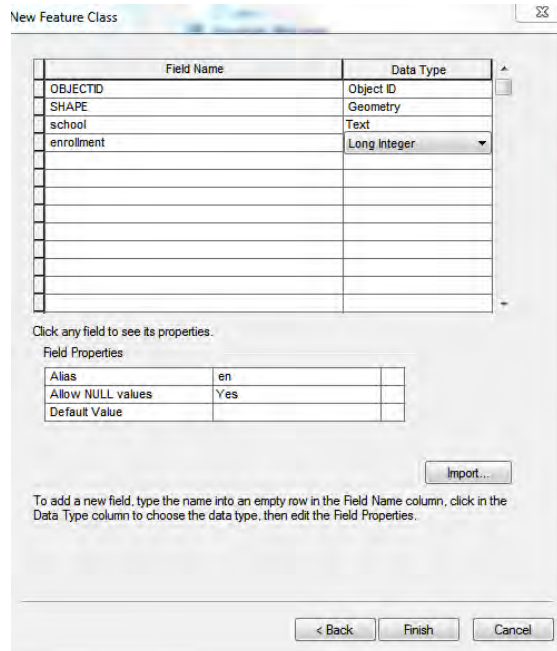
- Choose a projection coordinate system (Choose **New** or **Import** (if you want to import the same coordinate system of another layer on your system or listed on your current table of content, just point that layer))
- Click OK.

Note: You can add a base map to identify points that you need to collect

- Next, fill out attribute name and data type in New FEATURE CLASS box such as below:

(For a new shape file, go to in the catalog window in ArcMap, right click> properties>choose fields tab, then you see the similar box below)


Add your field names and data types that you want to create

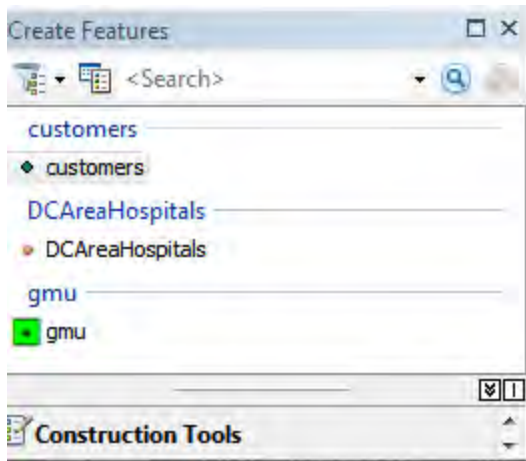




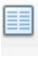
Then, you will see a new point layer with the name (*customers*) appeared in the table of content.

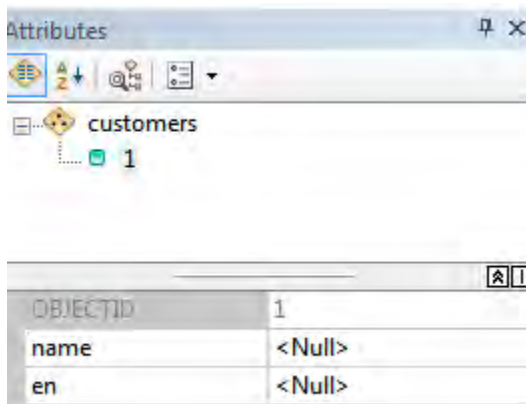
Step2: Collecting or locating Points that you want to mark

Note: make sure Editor tool bar is active

- Editor tool bar>Start Editing, then Click on  for creating features, you will see a box like:



- **Highlight** the layer that you created (ex. “customers” > start clicking  and put your mouse a point (location) on map that you want to collect (click  to select a point marker and delete the marker), then click on  to put attribute values.



- After done, go to **Editor>Save Edits**.
Note: Repeat the process to pick up more points and open the attribute table of your created shape file (customers) to see that your attribute values are there.

Created May 2016. Contact Joy Suh (hsuh1@gmu.edu) for any question on this tutorial.

Data Services, the University Libraries.

Copyrighted @ George Mason University