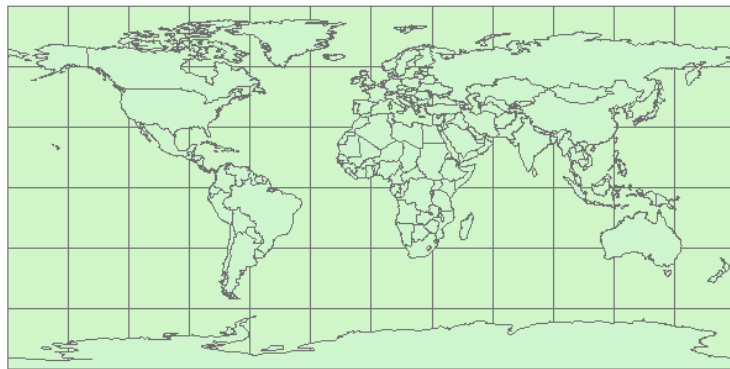


Projection Exercise:

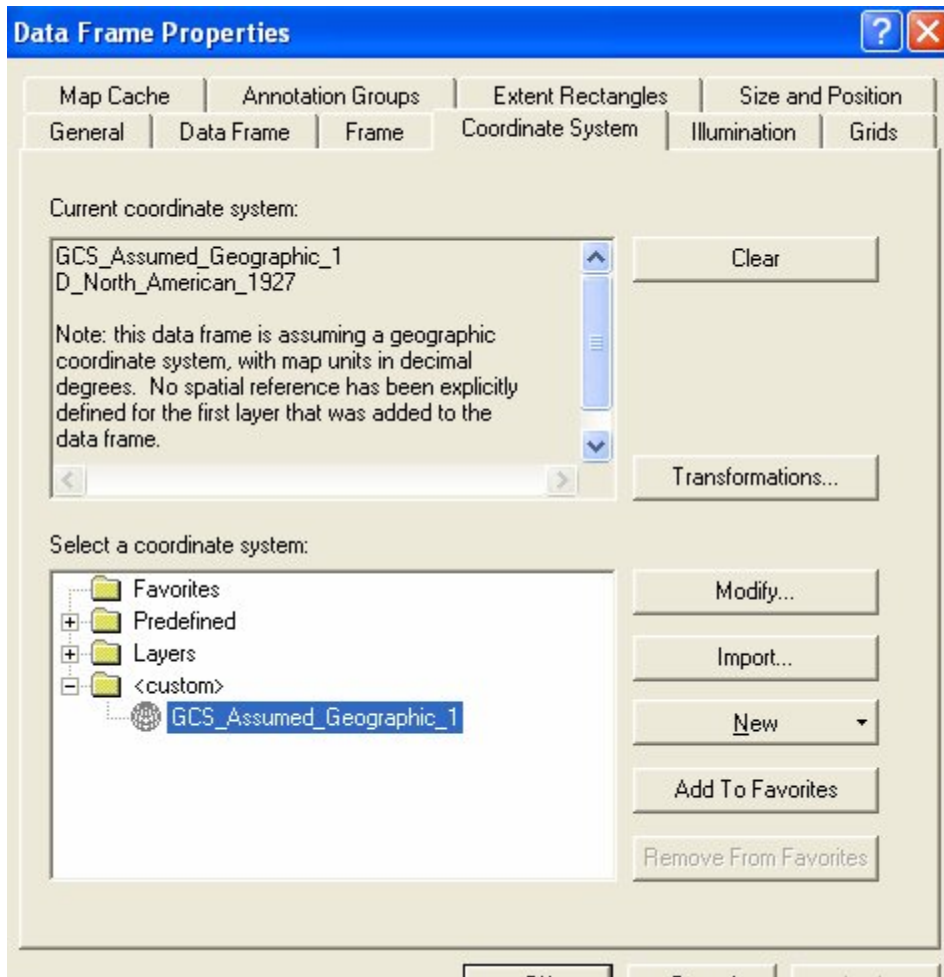
The Goal of this exercise is to give you experience in applying **different projections** to view maps in **ArcGIS**.

Working with Projections in ArcGIS

- 1) Open ArcMap
- 2) Add themes *C:\Gis Drop-In\projectiondata\cnty94.shp* and *C:\Gis Drop-In\projectiondata\world30.shp*

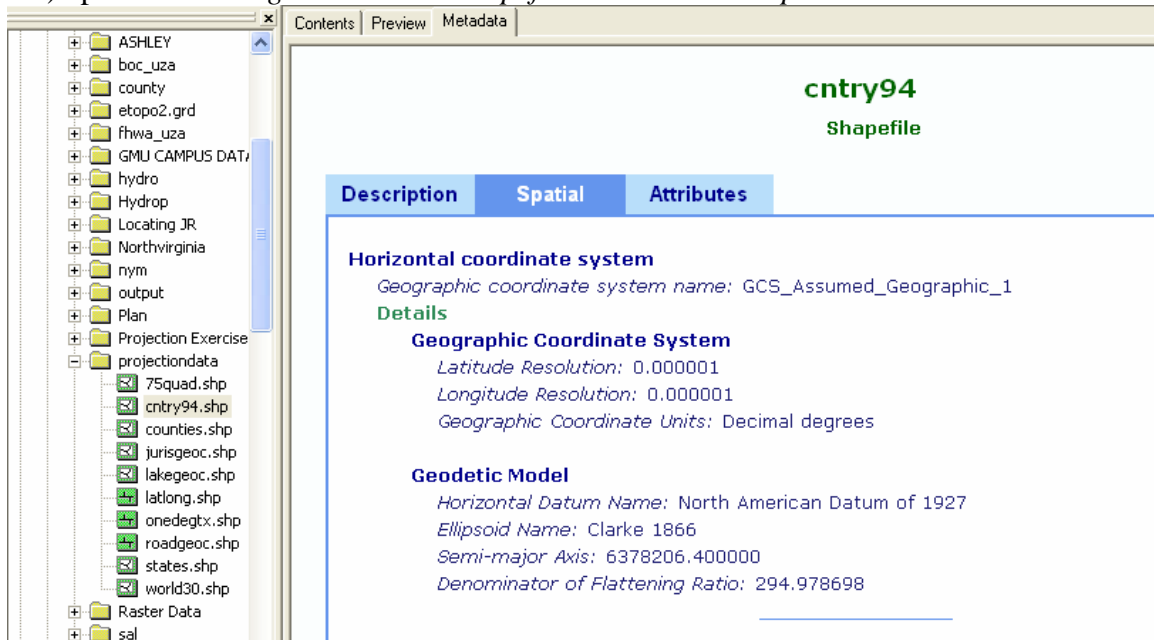


- 3) There are 2 ways to know which co-ordinate system a layer is using.
 - a)
 - 1) Check 1 layer and uncheck the other
 - 2) Go to *View>DataFrame Properties>co-ordinate system* .



b)

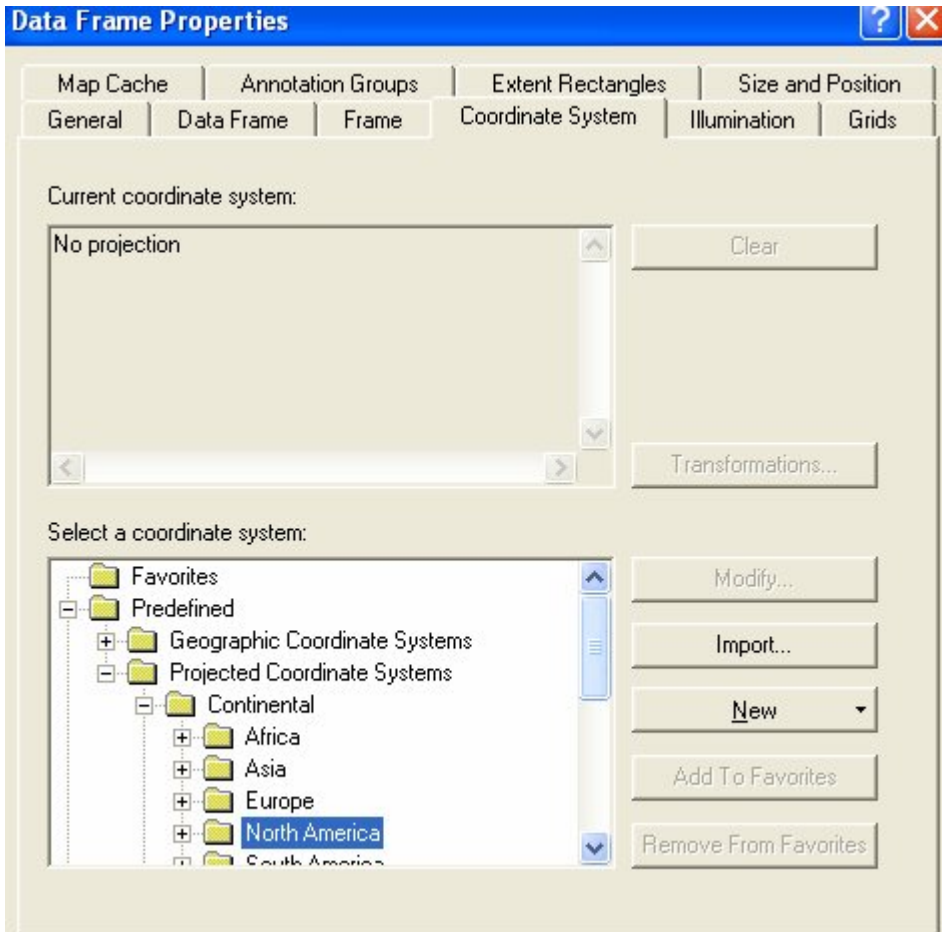
1) Open ArcCatalog > select the shapefile > MetaData > spatial as shown



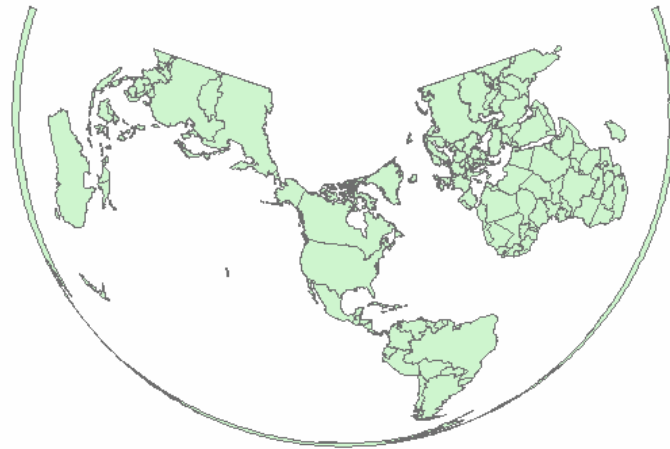
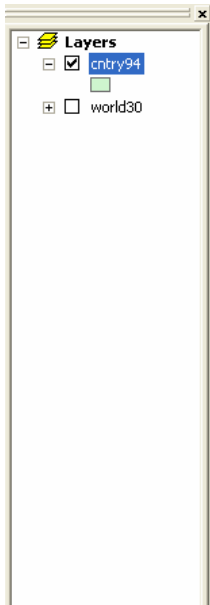
4) You can change the co-ordinate system of a shapefile to your own as shown below.

5) Go to *View>DataFrame Properties>Coordinate System* and follow as shown below.

6) Go to *Predefined>Projected Coordinate System>NorthAmerica>North_America_Albers_Equal_Area_Conic*



7) You will see the following projection change for the *cnty94.shp* file



8) When you go to *View>DataFrame Properties>Coordinate System*, you will see the following change in the Projected Coordinate System

